

# Test Report

Report No. RLSZE001186400001

Page 1 of 4

Applicant SHENZHEN FULLGO SECURITY PACKAGING TECHNOLOGY CO., Ltd

**Report on the submitted sample(s) said to be**

Sample Name tamper evident material  
Sample Description Blue plastic film with adhesive paste  
Part No. Fullgo-01  
Color blue  
Material Polyeste film  
Sample Received Date Feb. 29, 2012  
Testing Period Feb. 29, 2012 to Mar. 3, 2012

**Test Requested** As specified by client, to test Lead(Pb), Cadmium(Cd), Mercury(Hg), Hexavalent Chromium(Cr(VI)), Polybrominated Biphenyls(PBBs), Polybrominated Diphenyl Ethers(PBDEs) in the submitted sample(s) and it was tested as a whole.

**Test Method**

Test Item(s)	Test Method	Measured Equipment(s)	MDL
Lead(Pb)	IEC 62321:2008 Ed.1 Sec.8	ICP-OES	2 mg/kg
Cadmium(Cd)	IEC 62321:2008 Ed.1 Sec.8	ICP-OES	2 mg/kg
Mercury(Hg)	IEC 62321:2008 Ed.1 Sec.7	ICP-OES	2 mg/kg
Hexavalent Chromium(Cr(VI))	IEC 62321:2008 Ed.1 Annex C	UV-Vis	2 mg/kg
Polybrominated Biphenyls(PBBs)	IEC 62321:2008 Ed.1 Annex A	GC-MS	5 mg/kg
Polybrominated Diphenyl Ethers(PBDEs)	IEC 62321:2008 Ed.1 Annex A	GC-MS	5 mg/kg

**Test Result(s)** Please refer to the following page(s).

Tested by

*Rick*

Inspected by

*Vargas*  
Mar 3, 2012

Approved by

*Dan*

Date

No. 15501336

Technical Manager



# Test Report

Report No. RLSZE001186400001

Page 2 of 4

## Test Result(s)

Tested Item(s)	Content
Lead(Pb)	N.D.
Cadmium (Cd)	N.D.
Mercury(Hg)	N.D.
Hexavalent Chromium(Cr(VI))	N.D.

Tested Item(s)	Content
<b>Polybrominated Biphenyls(PBBs)</b>	
Monobromobiphenyl	N.D.
Dibromobiphenyl	N.D.
Tribromobiphenyl	N.D.
Tetrabromobiphenyl	N.D.
Pentabromobiphenyl	N.D.
Hexabromobiphenyl	N.D.
Heptabromobiphenyl	N.D.
Octabromobiphenyl	N.D.
Nonabromobiphenyl	N.D.
Decabromobiphenyl	N.D.

Tested Item(s)	Content
<b>Polybrominated Diphenyl Ethers(PBDEs)</b>	
Monobromodiphenyl ether	N.D.
Dibromodiphenyl ether	N.D.
Tribromodiphenyl ether	N.D.
Tetrabromodiphenyl ether	N.D.
Pentabromodiphenyl ether	N.D.
Hexabromodiphenyl ether	N.D.
Heptabromodiphenyl ether	N.D.
Octabromodiphenyl ether	N.D.
Nonabromodiphenyl ether	N.D.
Decabromodiphenyl ether	N.D.

**Note:** The sample had been dissolved totally tested for Lead, Cadmium, Mercury.

-MDL = Method Detection Limit

-N.D. = Not Detected (<MDL )

-mg/kg = ppm = parts per million

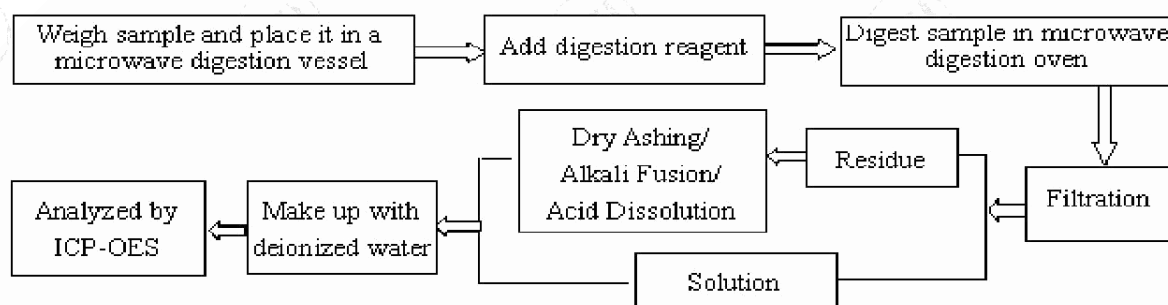
# Test Report

Report No. RLSZE001186400001

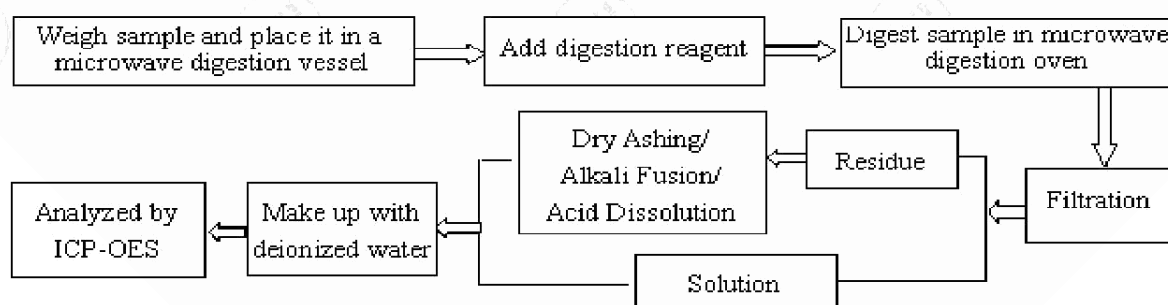
Page 3 of 4

## Test Process

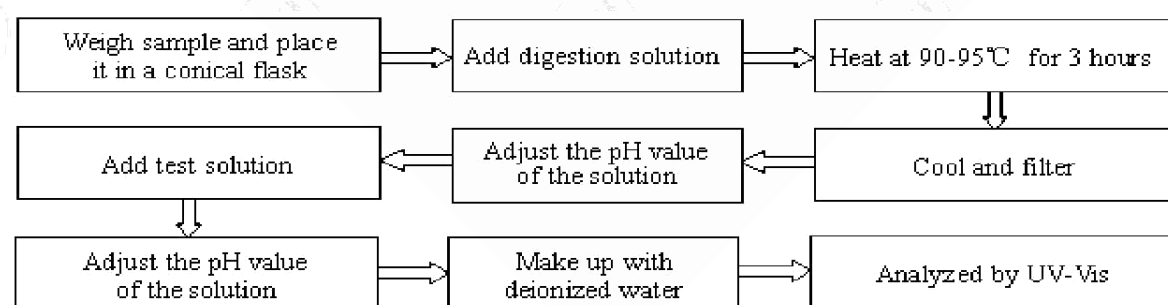
### 1. Lead(Pb), Cadmium(Cd)



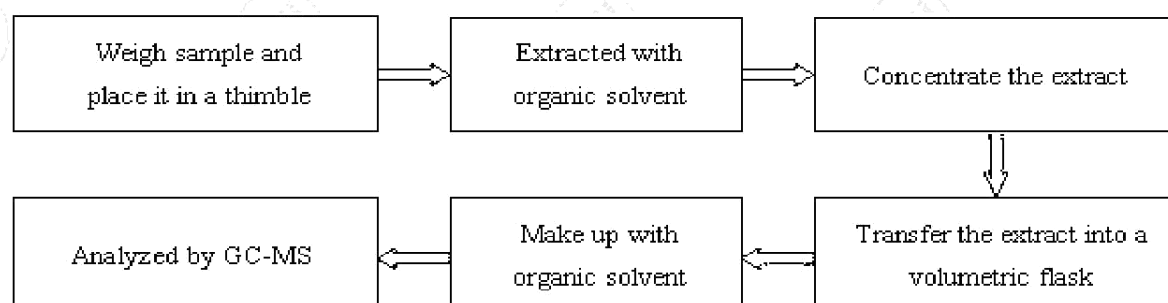
### 2. Mercury(Hg)



### 3. Hexavalent Chromium(Cr(VI))



### 4. Polybrominated Biphenyls(PBBs), Polybrominated Diphenyl Ethers(PBDEs)

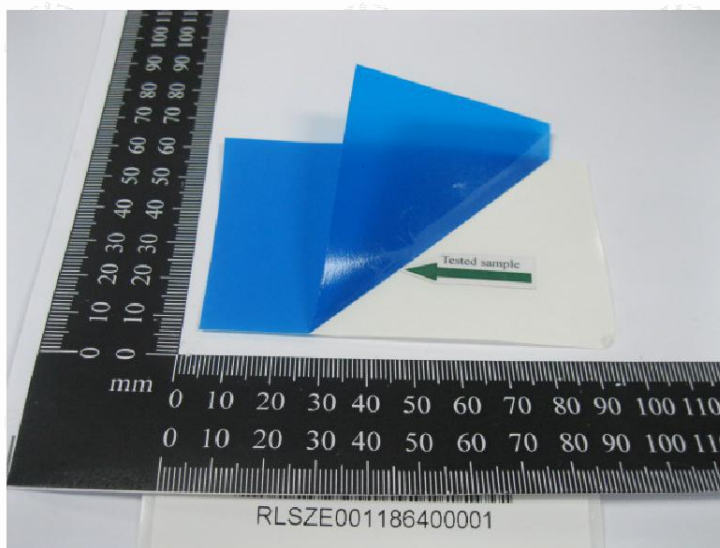


# Test Report

Report No. RLSZE001186400001

Page 4 of 4

## Photo(s) of the sample(s)



\*\*\* End of report \*\*\*

This report is considered invalidated without the Special Seal for Inspection of the CTI. This report shall not be altered, increased or deleted. The results shown in this test report refer only to the sample(s) tested. Without written approval of CTI, this test report shall not be copied except in full and published as advertisement.

Building C, Hongwei Industrial Zone, Baoan 70 District, Shenzhen